

# SPARKLING HOLIDAY

CELEBRATE THE SUNNY SEASON



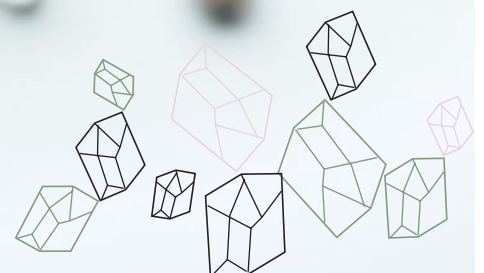
## CRYSTALLIZED™ – Swarovski Elements

Sew-on Stones Art. 3265	
Beads Art. 5000	
Beads Art. 5301	
Beads Art. 5601	
Pendants Art. 6401	
Pendants Art. 6650	
Rondelles Art. 77604	

\*Instruction enclosed

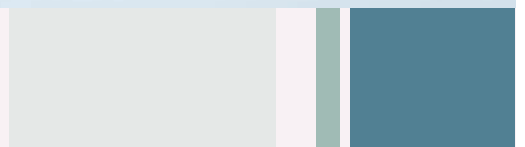
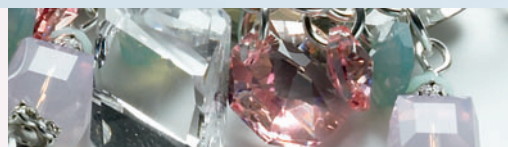
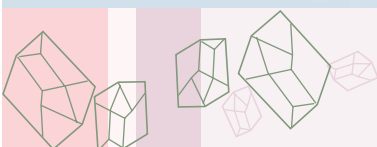


GRACE  
ABUNDANCE  
COOLNESS



Summer is the time to reveal glorious opulence. The nowhere-to-hide Summer Grace Charm-bracelet by CREATE your STYLE™ with CRYSTALLIZED™ – Swarovski Elements is the perfect companion to flatter your look and enhance the grace of your arm movement.

Big Sew-on Stones in white and silver shade are aligned to a streamlined graphical structure. The attached dangling bows of jumping-chain with a dense trimming of small pendants drop down like little water drops in accentuated mint and rose. Embrace the joyful splendor of summertime.



# SUMMER GRACE CHARM-BRACELET

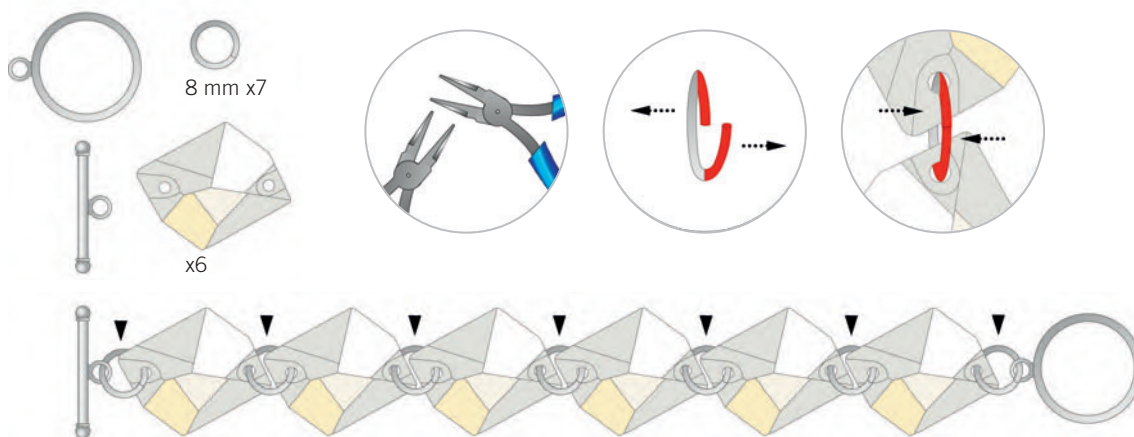


## CRYSTALLIZED™ – Swarovski Elements

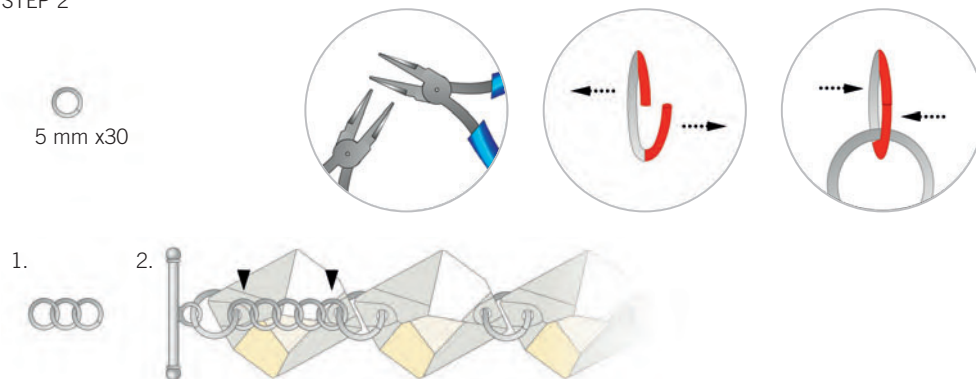


- Sew-on Stones  
Art. 3265  
26x21 mm  
Crystal 001  
Crystal Silver Shade  
001 SSHA
- Beads  
Art. 5000  
ø 4 mm  
Mint Alabaster 397
- Beads  
Art. 5301  
ø 8 mm  
Pacific Opal 390
- Beads  
Art. 5601  
ø 8 mm  
Violet Opal 389
- Pendants  
Art. 6401  
ø 8 mm  
Light Rose 223  
Pacific Opal 390
- Pendants  
Art. 6401  
ø 12 mm  
Light Rose 223
- Pendants  
Art. 6650  
ø 22 mm  
Crystal 001  
Crystal Silver Shade  
001 SSHA
- Rondelles  
Art. 77604  
ø 4 mm  
Crystal 001

### STEP 1



### STEP 2



Repeat Step 2 x5

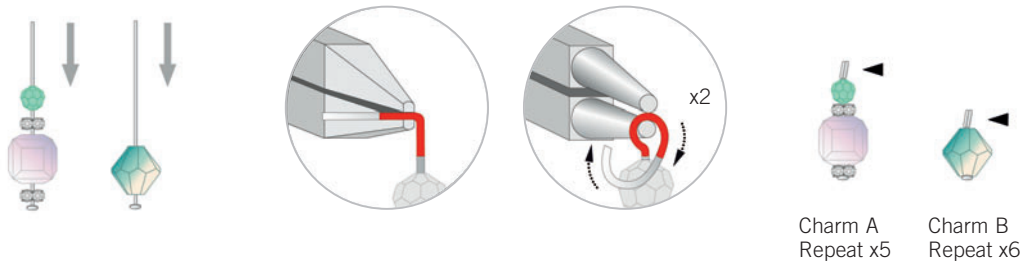
### Material

- Toggle 18 mm, Silver
- Jump Ring ø 5 mm, Silver
- Jump Ring ø 8 mm, Silver
- Head Pins

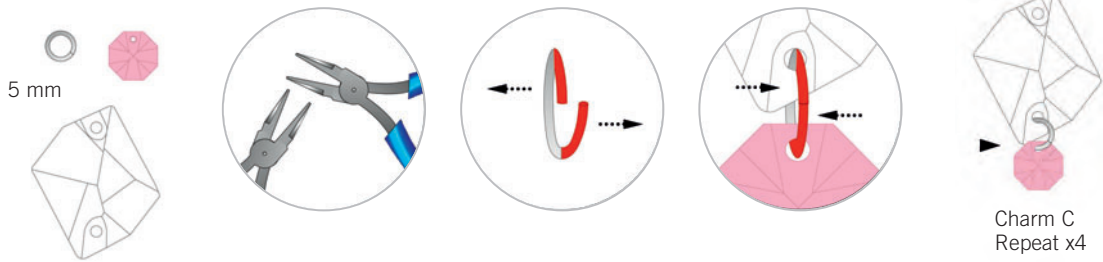
# SUMMER GRACE CHARM-BRACELET



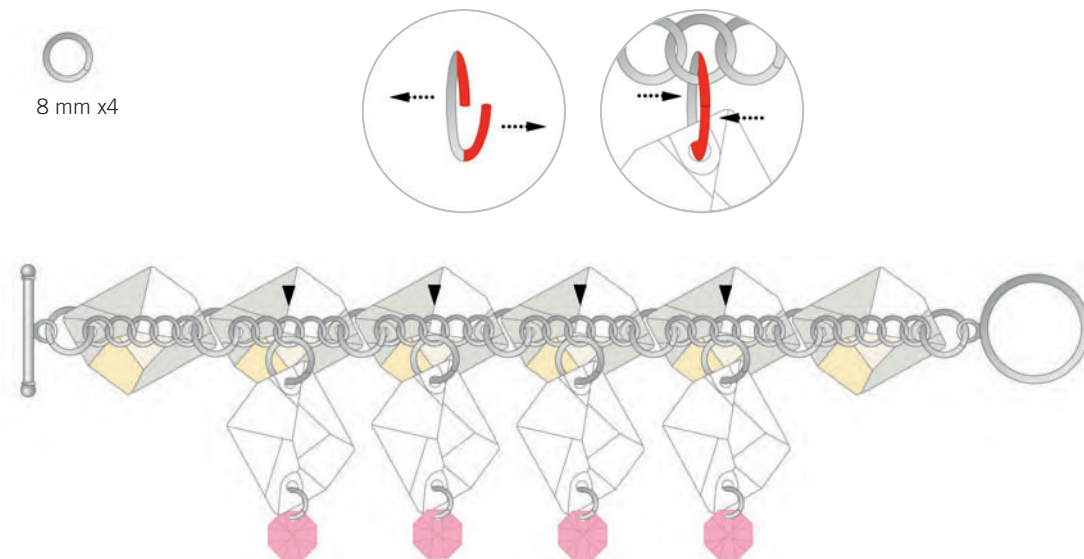
## STEP 3



## STEP 4



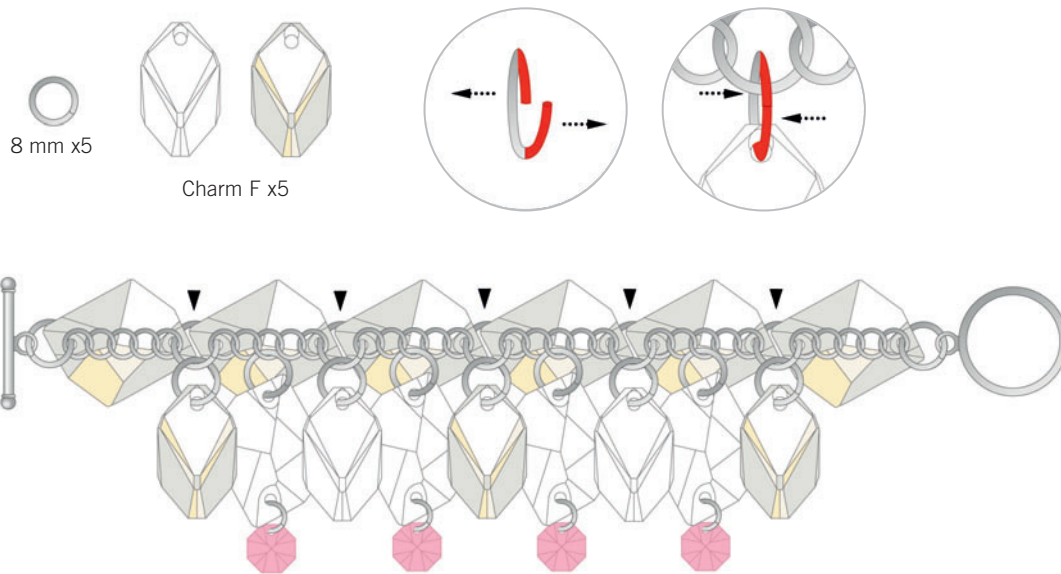
## STEP 5



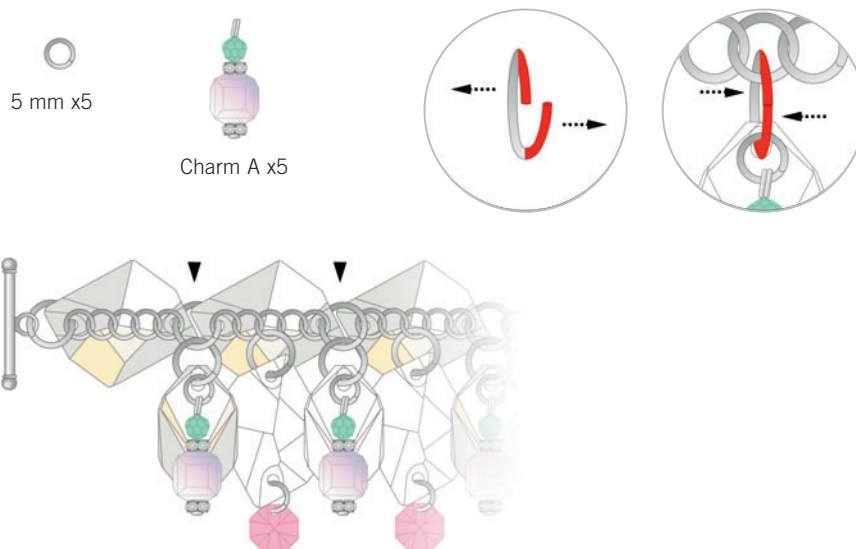
# SUMMER GRACE CHARM-BRACELET



## STEP 6



## STEP 7



# SUMMER GRACE CHARM-BRACELET



STEP 8

