

CREATE  
YOUR STYLE  
with SWAROVSKI ELEMENTS

DESIGN PROJECT  
SUMMER HOLIDAY  
**BRACELET**  
COLOURS OF THE SEA



# BRACELET "COLOURS OF THE SEA"



## SWAROVSKI ELEMENTS

Article	Product Group	Article No.	Amount	Size	Colour	Colour Code
	Sew-on Stones	3240	2 pcs.	16 mm	Crystal Volcano F	001 VOL
	Sew-on Stones	3250	1 pc.	18x13 mm	Crystal Tabac F	001 TAB
	Sew-on Stones	3257	1 pc.	19x13 mm	Montana F	207
	Sew-on Stones	3257	1 pc.	19x13 mm	Topaz F	203
	Sew-on Stones	3270	1 pc.	22 mm	Crystal Tabac F	001 TAB
	Sew-on Stones	3270	1 pc.	22 mm	Crystal Volcano F	001 VOL
	Fancy Stones	4437	2 pcs.	14 mm	Crystal Bermuda Blue	001 BBL
	Beads	5000	1 pc.	4 mm	Fuchsia	502

## Supplies & Tools

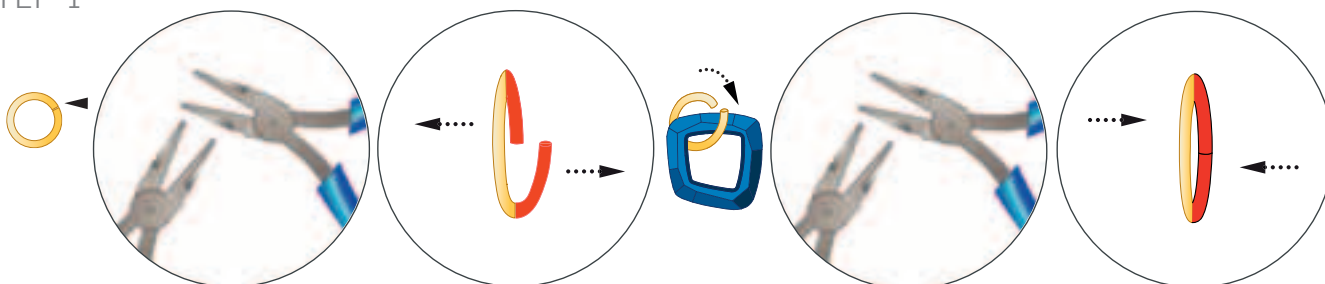
**Supplies**  
 1x Lobster: 1012560000003, gold, large  
 7x Jump ring, gold, Ø 6 mm  
 11x Jump ring, gold, Ø 8 mm  
 1x Head pin, gold

**Tools**  
 Flat nose pliers  
 Round nose pliers  
 Side cutter

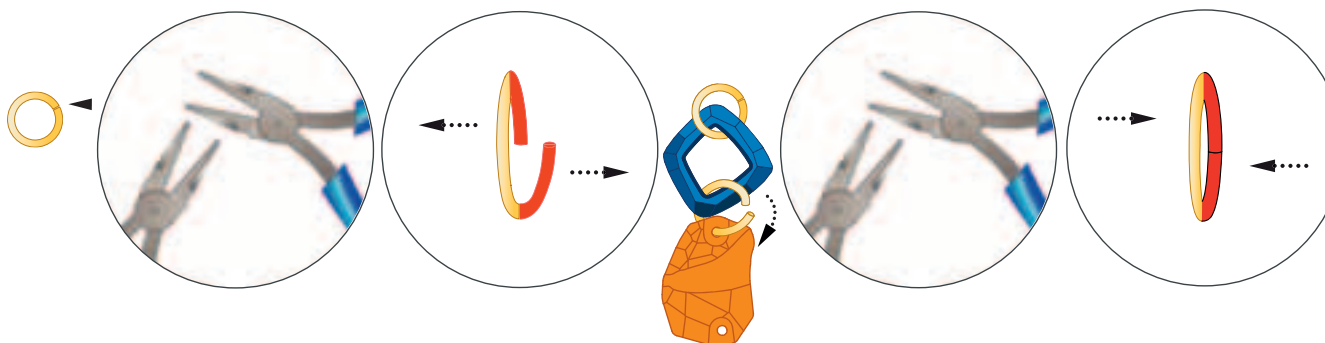
Level of design: BEGINNER

Have also a look at the **text instruction** at the last page!

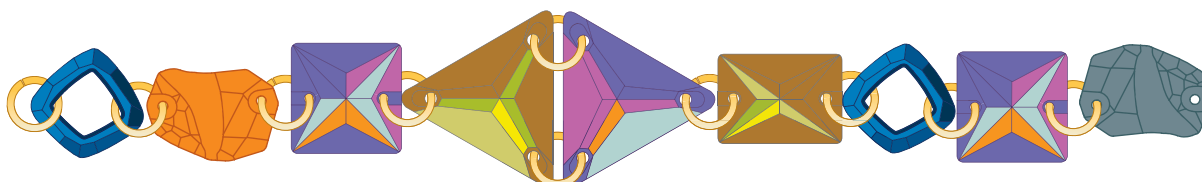
### STEP 1



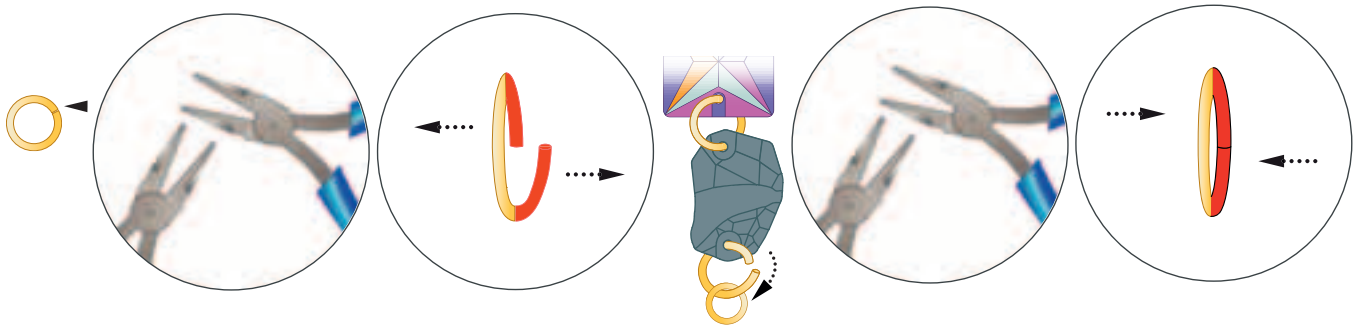
### STEP 2



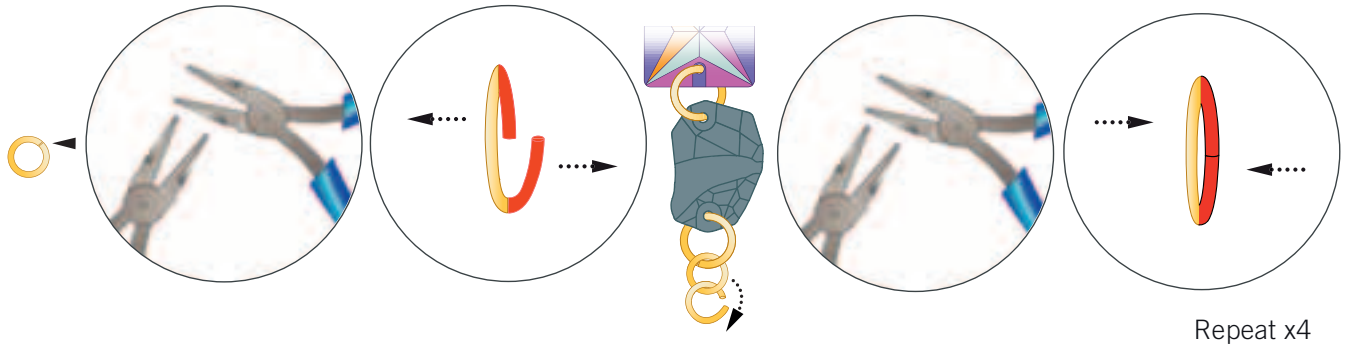
Repeat step:



STEP 3

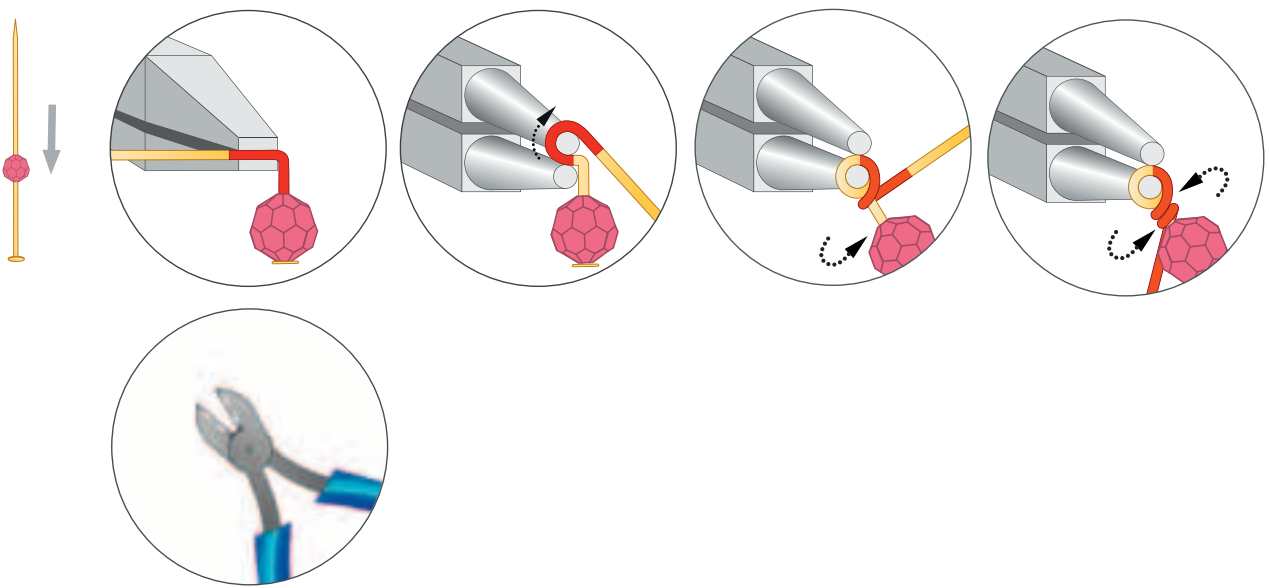


STEP 4

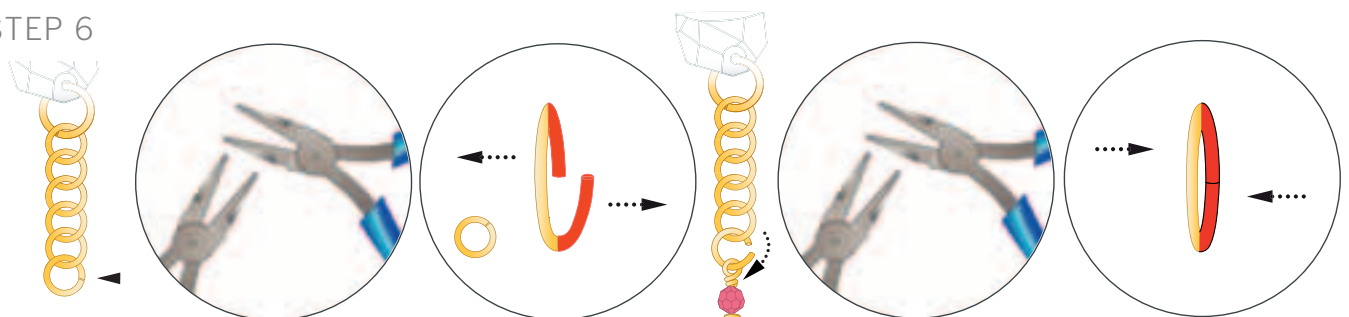


Repeat x4

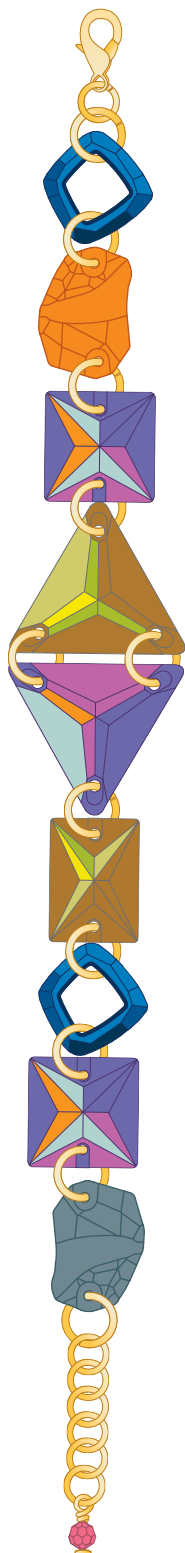
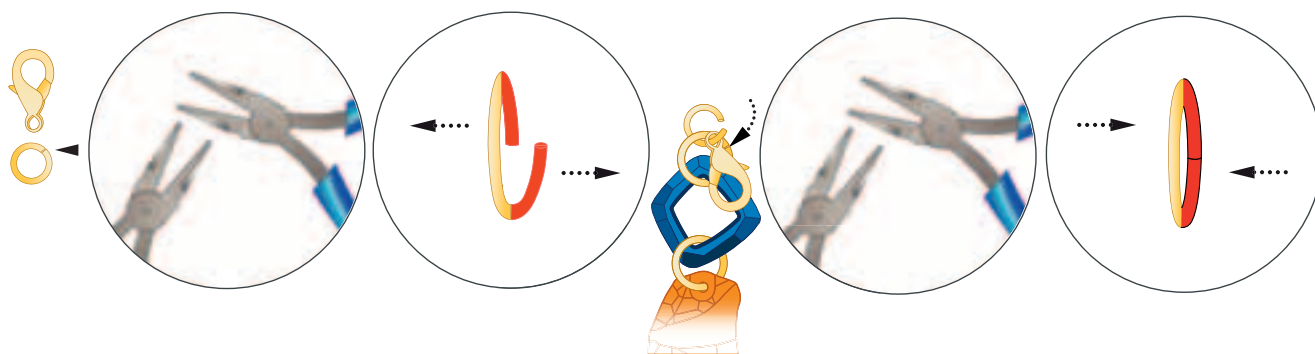
STEP 5



STEP 6



STEP 7



CREATE YOUR STYLE Design Project  
Summer Holiday Bracelet “Colours of the Sea”

- STEP 1: Open an 8mm jump ring using flat nose pliers and insert the Fancy Stone art. 4437 from the SWAROVSKI ELEMENTS assortment. Close the jump ring.
- STEP 2: Open another 8mm jump ring and insert Swarovski Sew-on Stone art. 3257 and Fancy Stone article 4437 from step 1. Close the jump ring. Repeat this process with the remaining SWAROVSKI ELEMENTS as illustrated.
- STEP 3: Open an 8mm jump ring attaching it to the Swarovski Sew-on Stone art. 3257. Attach a 6mm jump ring and close the 8mm jump ring.
- STEP 4: Open another 6mm jump ring and attach it to the 6mm jump ring from step 3. Close the jump ring. Repeat this four times.
- STEP 5: Insert the head pin through the Bead art. 5000 from the SWAROVSKI ELEMENTS assortment. Bend the head pin at a right angle and form a loop using the round nose pliers. Wrap the head pin around twice as shown in illustration. Cut off excess.
- STEP 6: Open a 6mm jump ring and insert the headpin with Swarovski Bead art. 5000 from step 5 and close the jump ring.
- STEP 7: Open a 6mm jump ring and insert the Swarovski Lobster clasp, article 1012560000003 and close the jump ring.